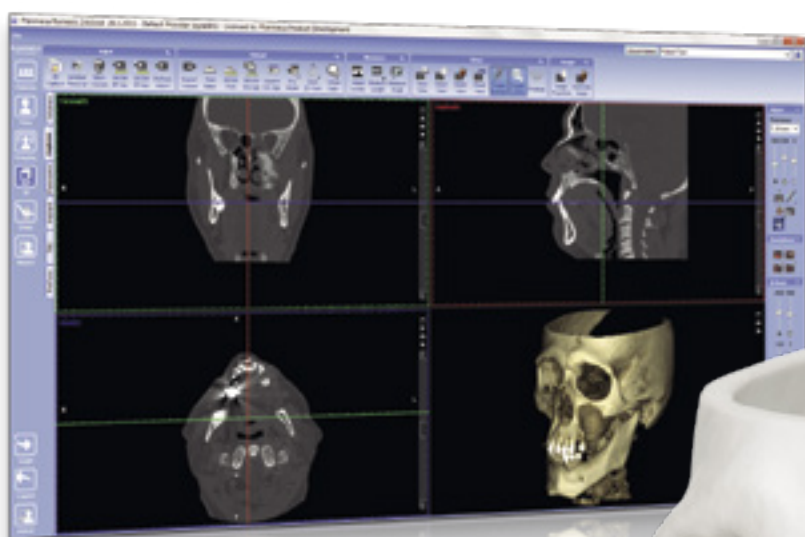


Maxillofacial surgery

You imagine it. We make it.



Individually designed, patient-specific implants

Planmeca ProModel™ – a unique service for maxillofacial surgery

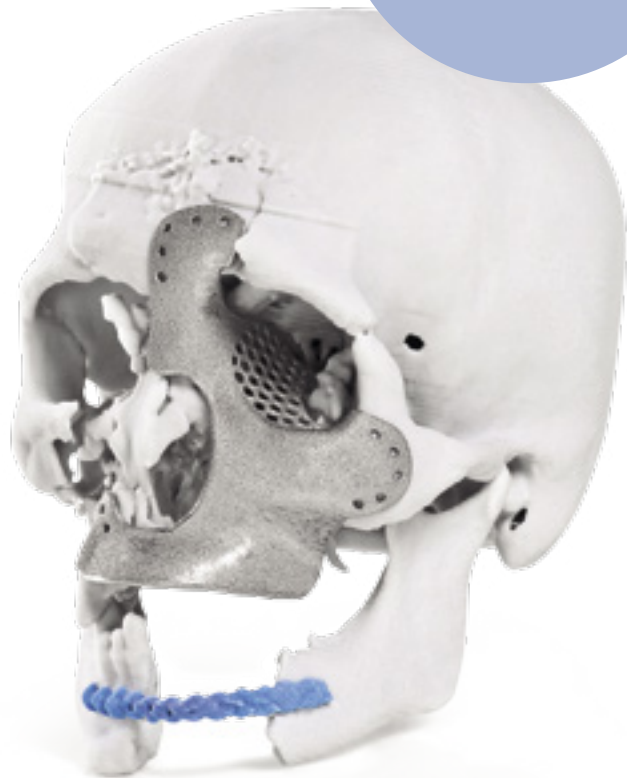


Planmeca ProModel™ service concept

Planmeca ProModel™ offers patient-specific implants, surgical guides and 3D skull models for maxillofacial surgery. These, together with our superior CBCT images and 3D face photos, offer you the best tools to succeed in both pre-planning and the surgery itself.

Faster operations
precise fit and better
aesthetic results

- A unique service for creating patient-specific implants, surgical guides and 3D skull models from CBCT/CT images
- 3D implants are designed in an online session between the surgeon and Planmeca designer
- The implants are designed and manufactured to match any form
- Ordering is quick and easy – from order to delivery in just a few business days
- Reduces operation times by up to 3,5 hours and overall costs by more than 10%
- Faster and more precise operations leading to better aesthetic results



Planmeca Showroom



infokit.planmeca.com



Planmeca iRomexis™



PLANMECA

Asentajankatu 6 | 00880 Helsinki | Finland | tel. +358 20 7795 500 | fax +358 20 7795 555 | sales@planmeca.com | www.planmeca.com

Images may contain optional items not included in standard delivery. Available configurations and features may have country or area specific variations. Some products displayed above may not be available in all countries or areas. Rights for changes reserved.

Planmeca, All in one, Anatomat Plus, Cobra, Comfy, Digital perfection, Economat Plus, Elegant, Flexy, Perio Fresh, PlanEasyMill, Planmeca AINO, Planmeca ARA, Planmeca Chair, Planmeca Compact, Planmeca Intra, Planmeca iRomexis, Planmeca Lumion, Planmeca Minea, Planmeca Minendo, Planmeca Minetto, Planmeca Noma, Planmeca Online, Planmeca PlanCAD, Planmeca PlanMill, Planmeca PlanScan, Planmeca Planosil, Planmeca ProCeph, Planmeca ProFace, Planmeca ProLED, Planmeca ProMax, Planmeca ProModel, Planmeca ProOne, Planmeca ProScanner, Planmeca ProSensor, Planmeca ProX, Planmeca Romexis, Planmeca SingLED, Planmeca Sovereign, Planmeca Ultra Low Dose, Planmeca Vision, Planmeca Waterline Cleaning System, Proline Dental Stool, Saddle Stool, SmartPan, SmartTouch, Trendy, Ultra Relax and UltraTouch are registered or non-registered trademarks of Planmeca in various countries.

